



**AURA**

ADD: 41 Sunrise D3, the Manor Central Park, Hoang Mai, Ha Noi  
D7 - 01 Mon Bay, Hong Ha, Ha Long, Quang Ninh  
TEL: +84 963954969  
E-mail: info@auralighting.vn  
www.auralighting.vn





# Feeling Light

## AURA

As one of the leading companies operating in the field of lighting design in Vietnam, Aura specializes in providing lighting solutions for projects with consulting services, lighting design and lighting equipment supply. bright. We are the exclusive distributor of Emilux and many lighting companies in the world, with diverse and quality products meeting all interior and exterior lighting for customer projects: hotels, restaurants, villas, townhouses, showrooms, resorts and other types of projects.

With a team of staff with many years of experience in the lighting field, Aura believes it will bring the optimal solution with the highest efficiency, increasing the value of the project at the most reasonable cost.



# LIGHT

Has a great effect on us humans. not only does it allow us to see. Light stimulates us, and influences our moods and activity levels.

Good lighting contributes to comfortable, flexible and stimulating working environments. our lighting solutions help increase safety, and enhance productivity

# Moon

Power: 12W

Beam angle: 55°

Cut-out size: Ø75mm

In Moon series of products, the lamp body adopts split design and compact lamp structure, lamp body and the frame is easy to disassemble and install, the frame can embedded installation, improve construction and installation progress, it will not damage the ceiling when disassemble.

The exquisite electroplating surface treatment art, using unique nano dust-proof technology, the reflector surface has long been like new, it is also wear-resistant and anti-hard scratches



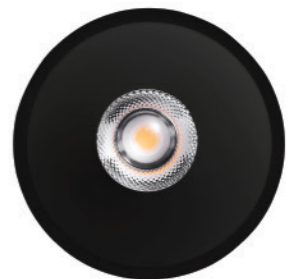
## Tunable white 2700K-6000K

Tunable white enables you to perfectly illuminate workplain and ideally emphasise environment. Warm white light colours is suitable for relaxing and winter time, neutral white are ideal for helping maintain performance for a longer time



## Dimable 0.1% - 100%

Dimable function give you flexibility to choose the preferred illuminance level



# MOON ADJ

Power: 7W/12W  
Cut-out size: Ø55mm/Ø75mm  
Beam angle: 15°/55°



## Module structure

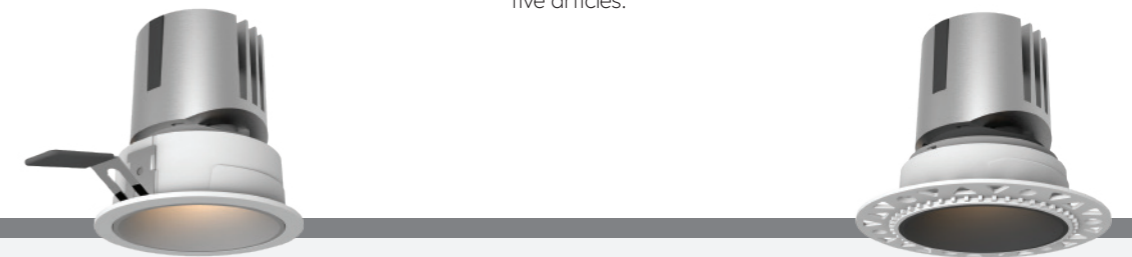
Adopting independent module design, the installation structure and lamp body are separated which makes maintenance or installation easy and convenient

## Adjustment

It is used to illuminate the floor or other horizontal surfaces.

## Trimless

The light beam can be directed to vertical surface to highlight decorative articles.



# Taurus

Power: 7W/12W/15W/18W  
Cut-out size: Ø55mm/Ø75mm/Ø95mm  
Beam angle: 24°/36°/55°



## High-end downlight in recessed & trimless

TAURUS is the latest evolution of VILLA downlight system. In addition to aesthetic design, precise light control and great UGR, the versatility of TAURUS, underwritten by its compact format and super modular design. One LED Module shares numerous mounting rings.



# Aries

Power: 7W/10W

Cut-out size: Ø55mm/Ø75mm

Beam angle: 15°/36°/55°

## Effectively reduce glare

The light is not perceived by those who live the space to guarantee a high visual comfort. The optical bench, set back from the recessed surface, hides from the view the light source



Bright white   Bright black   Silver   Silver mist   Black light

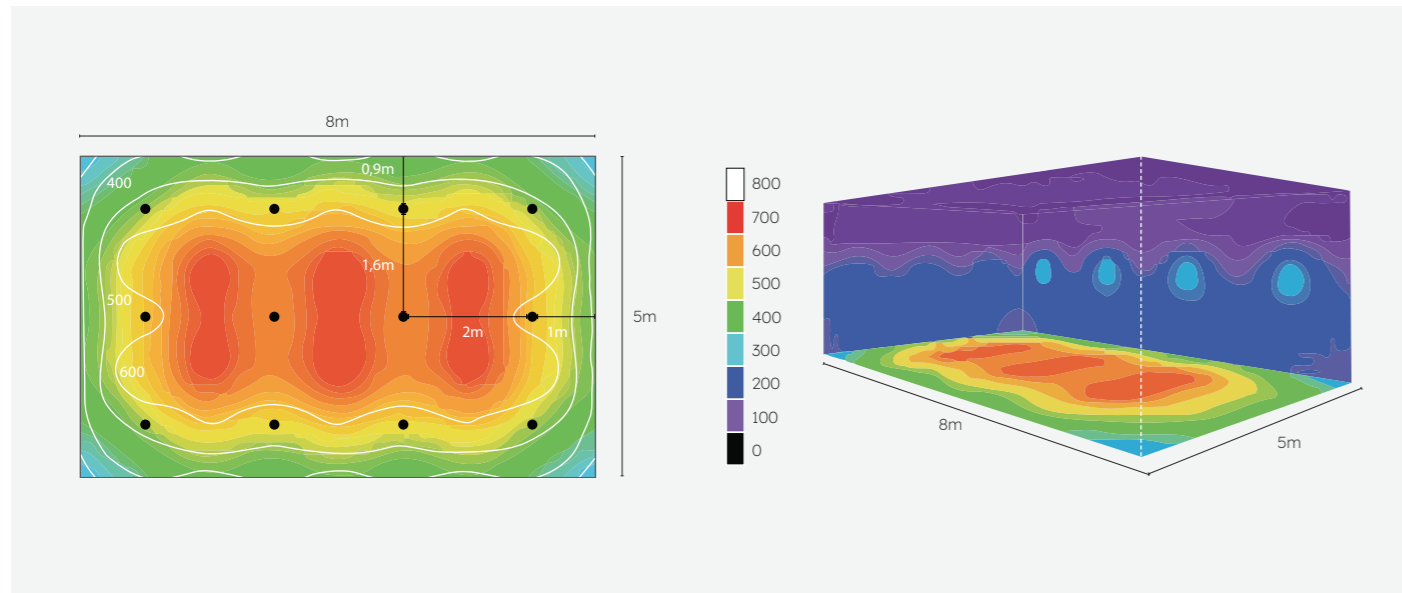


# Crown

Power: 12W/20W

Cut-out size:  $\Phi 95\text{mm}$

Beam angle:  $36^\circ/55^\circ$



The light is not perceived by those who live the space to guarantee a high visual comfort. The optical bench, set back from the recessed surface



# Foria

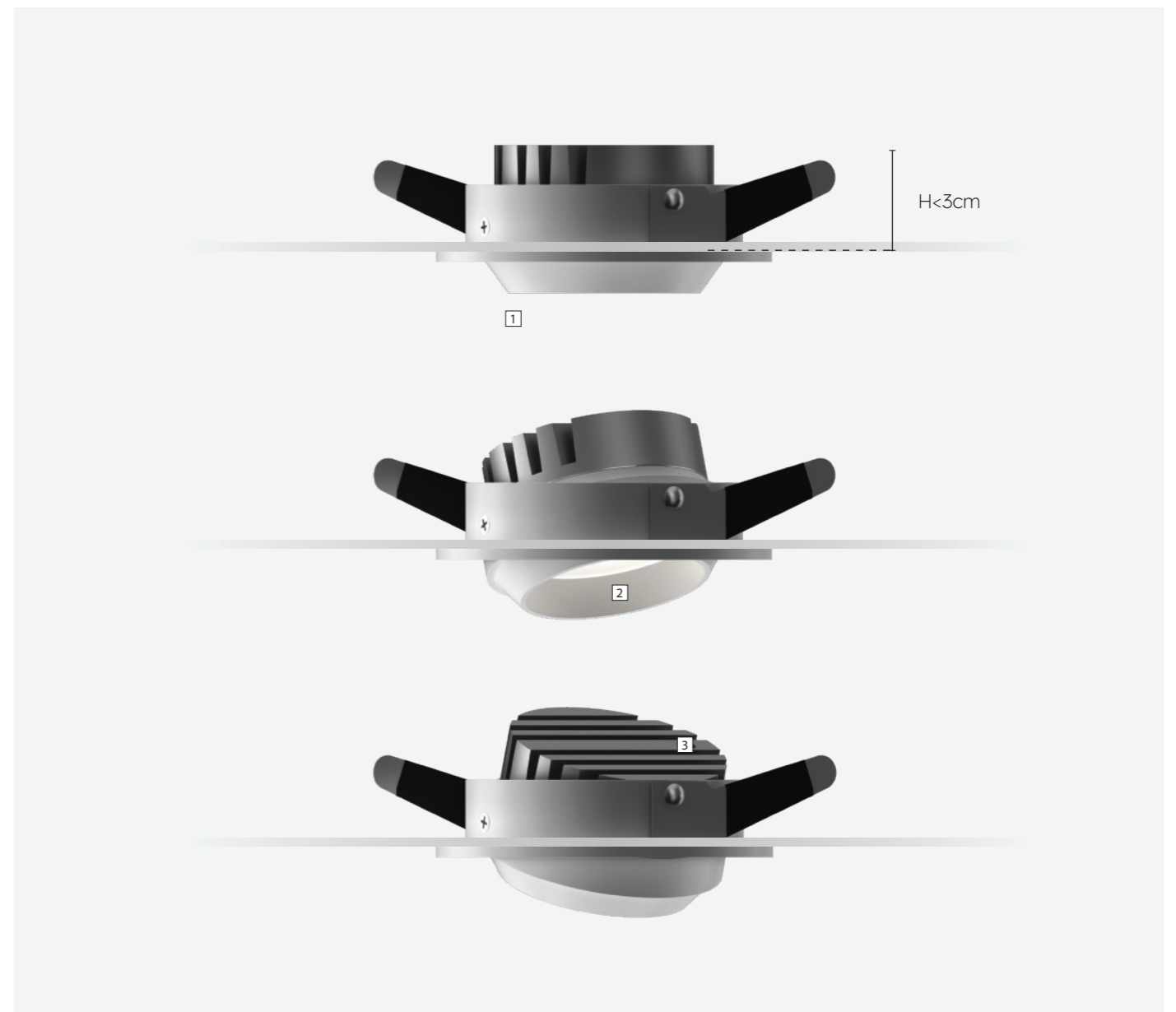
Power: 7W/12W  
Cut-out size: Ø35mm/Ø55mm  
Beam angle: 24°/36°



## Excellent heatdissipation effect

Small lamp body, multiple functions.  
Super long radiator with excellent heatdissipation effect.  
Mininal watts can be 7W . Maximum watts can be 12W.





## Mini

Power: 3W

Cut-out size: Ø40mm

Beam angle: 10°

The lamp body can be adjusted to  $\pm 25^\circ$ , so that the function of the lamp is diversified and wall washing lighting and key lighting can be realized. Create different lighting effects for modern buildings.

1 Ultra thin lamp body, suitable for low floor and high space.

2 Anti glare front ring, effectively reduce glare.

3 Sufficient heat-sink made of die-cast aluminum



35mm  
2W



40mm  
5W



55mm  
7W

# Mini

Beam angle: 15°/24°

## Miniature and elegant

The design for Mira series is to create ultimate visual comfort.  
Cutout range from 30-60mm, suits for small cutout size of ceiling and short distance which is less than 100mm.  
Designed for a variety of compositions.



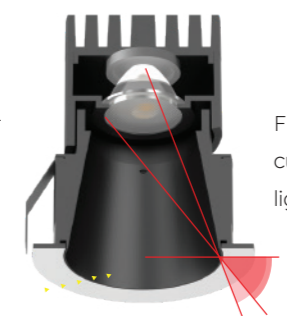


# Mini

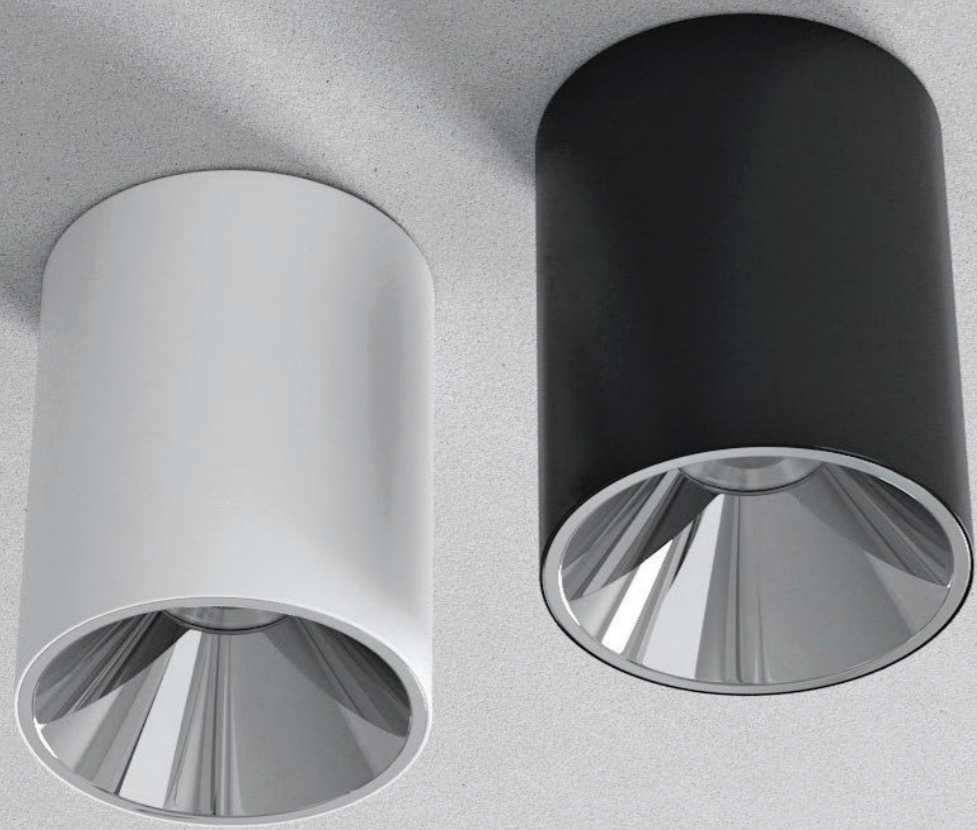
Power: 5W  
 Cut-out size:  $\Phi 50\text{mm}$   
 Beam angle: 15°



The maximum lamp body of 25° can adjust the Angle, which greatly facilitates the lighting needs of on-site debugging.



Fitting in anti glare construction increases the cutoff angle. UGR $\leq 9$  achieves comfortable lighting environment.



# Xavia

Power: 10W  
Diameter: Ø75mm  
Beam angle: 36°

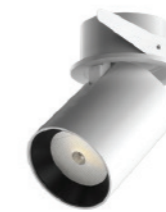
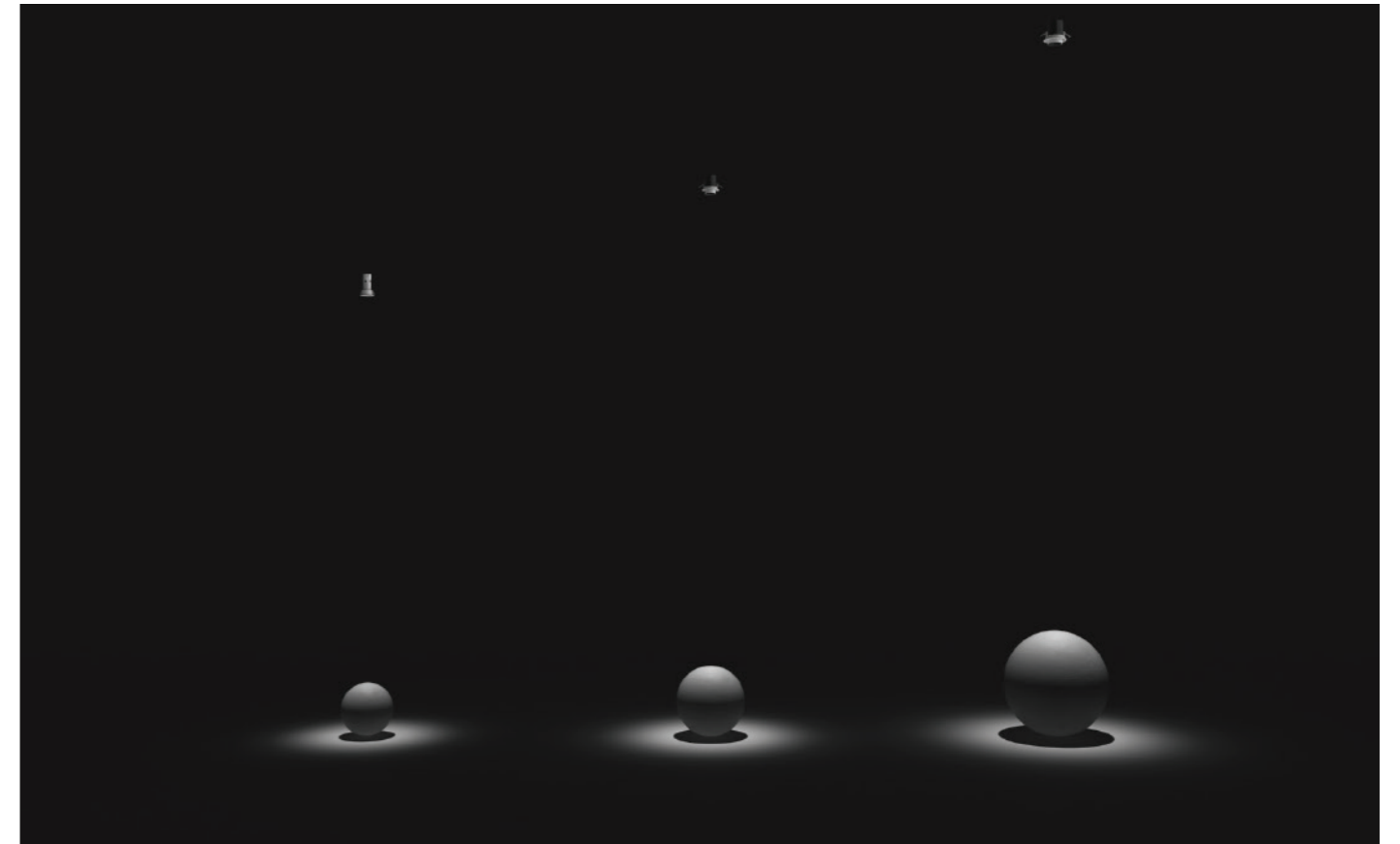
## Easy installation, low glare

Surface mounted structure convenient for installation.  
Adopt darklight reflector, the excellent low-glare control provides high visual comfort for the applications.



# Lina

Power: 6W/12W  
Cut-out size: Ø35mm/Ø60mm  
Beam angle: 24°/36°



6W

Ø 35mm

12W

Ø 60mm

25W

Ø 85mm

## Brightness, more than one

Three kinds of power specifications are available to suit different layers.

# Lina

Power: 6W

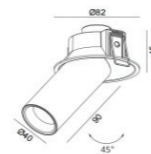
Cut-out size:  $\Phi 75\text{mm}$

Beam angle:  $24^\circ$



## Flexibility, more than one

Various installation structures are optional, family design, enhance visual unity;  
Let the light move at will to maximize the value of light efficiency





# Lyss

Power: 10W/20W

Cut-out size: 195mm\*45mm

Beam angle: 36° /30\*75°

## Very high visual comfort

Led linear light with top quality lens

High thermal conductive aluminum body metal black surface coating, free adjusted perfect wash wall effect

Is the first choice of lighting designers.



Spotlight



Downlight



Wallwasher



# Neva

Power: 12W/20W

Beam angle: 24°

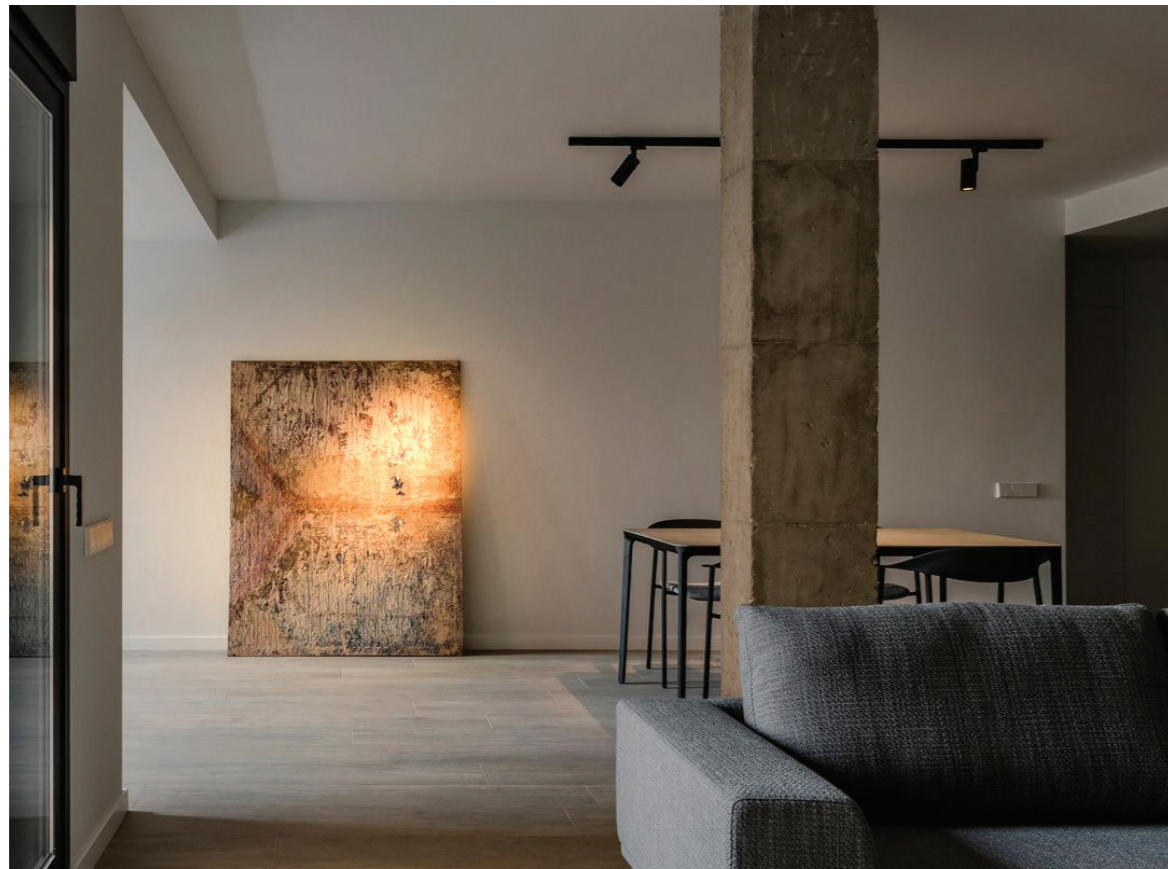
CRI: 90

## Track Light

Using high-quality LED chips, the light color is pure with excellent color consistency and high CRI.

Precise optical design, pure light color, perfect light spot to create excellent lightings.

Professional design is beneficial to heat dissipation, effectively extend the lifespan of the lamp





# Focus

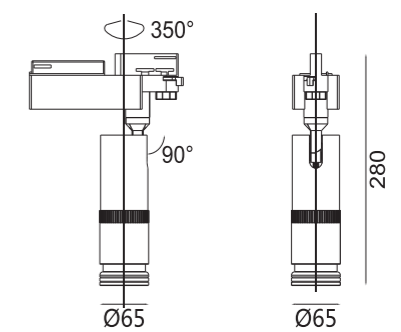
Power: 10W/15W

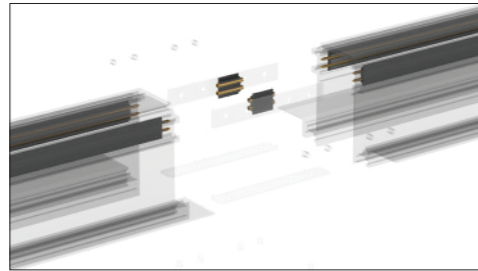
Beam angle: Zoomable

Dimmer: Daili/0-10V/Triac



Color selection





Maintain a stable connection  
The copper wire is energized through the connector, and it is not easy to fall off or have poor contact

Magnetic track  
50cm/100cm

90 degree angle  
(exposed corner)

universal joint

90 degree  
angle  
(Flat angle)

90 degree  
angle  
(Internal  
corner)

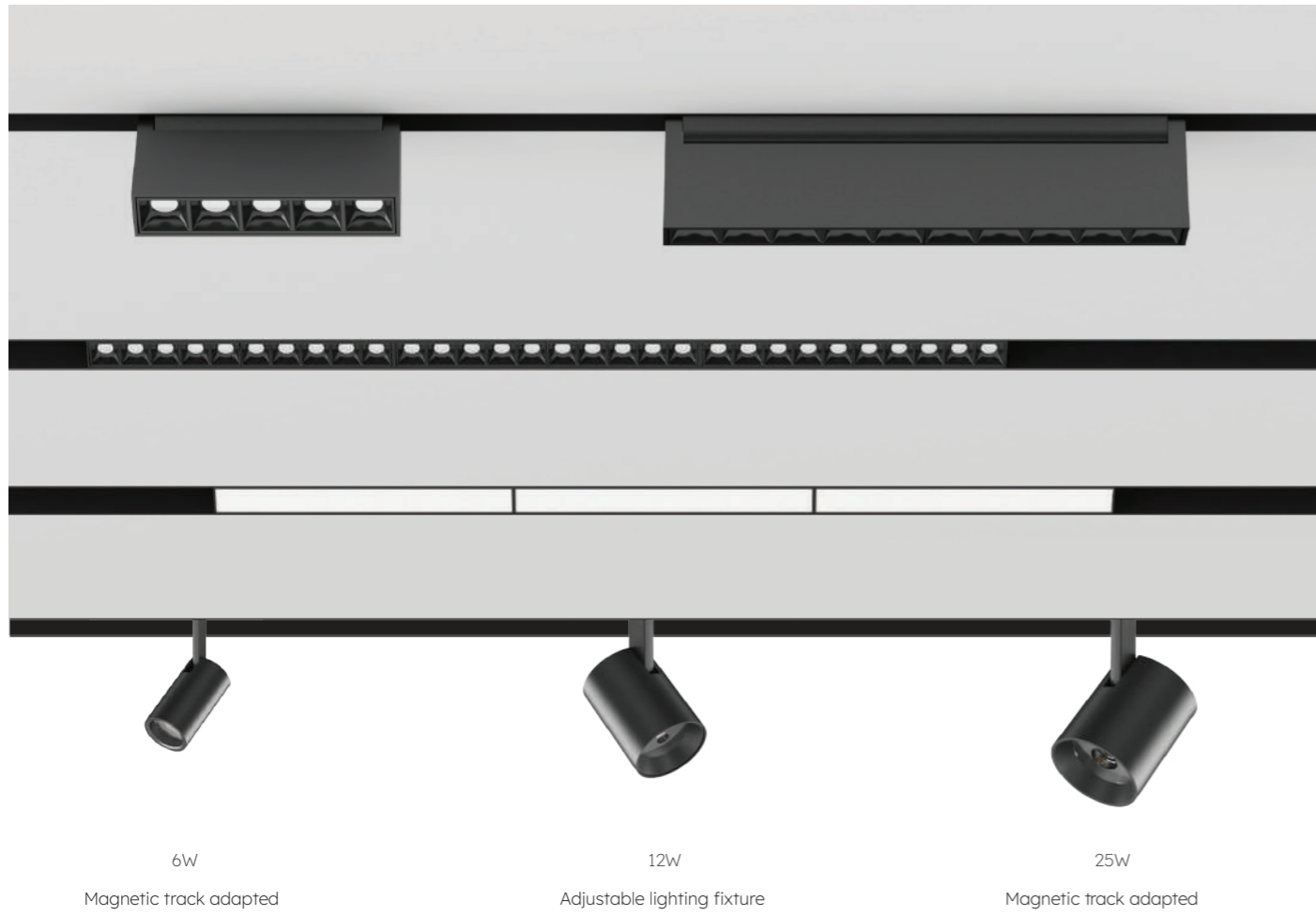
48V Power  
drive



# Linear System

## 48V Safe Voltage

PK 2.0 has 35 mm side four-wire 2-loop Guide.  
Suitable for surface mounted or suspended with 1000mm steel cable.  
Track Rail available with standard lengths 500mm and 1000mm.  
'L' shape corner module available for flexible system.  
Linear Connector and Continuous Kit provided for continuous Track Rail connection.  
Insets available with Non Dim and 1-10V Dim.  
Various lighting insets with multiple lighting applications, Tool-free insert mounting by clip-in mechanism.



6W  
Magnetic track adapted

12W  
Adjustable lighting fixture

25W  
Magnetic track adapted

### Round Spotlight Insets

Three specifications are available, 6W/12W/25W  
Flexible and adjustable, horizontal 355 degree adjustable/vertical 90 degree adjustable.  
Supportable anti-glare accessories: honey comb/ Soft Lens/stripe/Square.



### Linear General Light

Can be used in combination, seamless stitching  
Simple structure, easy installation, break the existing installation mode,  
can achieve seamless splicing, no dead angle,  
no dark area distribution of light scene.



6W  
5 beads



12W  
10 beads



12W  
Accent lighting



12W  
Polarized lighting





## C Shape

Power: 36W/60W

Size:  $\Phi$ 400mm/ $\Phi$ 580mm

Beam angle: 120°

Dimable / Tunable white

Chrome



Rose Gold



# Pendant

Power: 12 W  
Size: Ø120mm  
Beam angle: 90°  
Dimable



# Spotlight

Power: 6W/10W/12W

Beam angle: 8°/12°

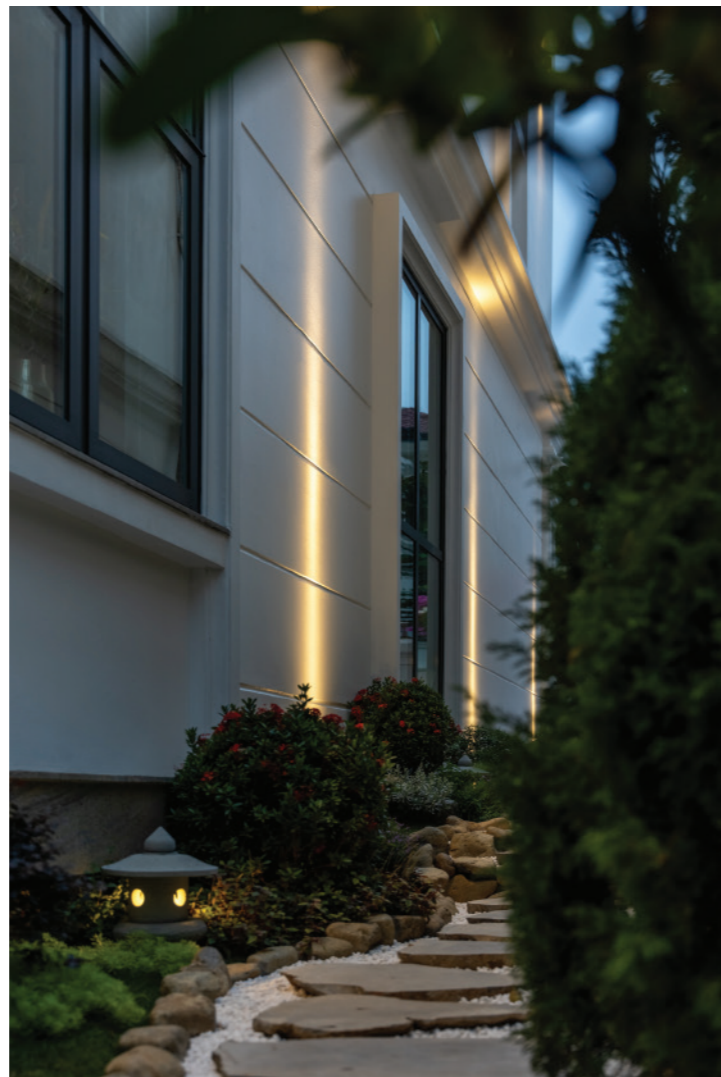
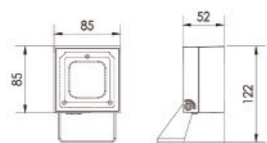
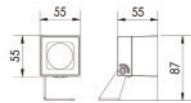
IP: 65

## Small projection

Titan lamp with a special small beam angle design, giving concentrated light,

Can illuminate columns 8-10m high.

High quality aluminum material with IP67 protection index, you can rest assured intended for outdoor use.



# Spotlight

Power: 3W/5W/10W  
Beam angle: 15°/30°  
IP: 65

## Spotlight Garden

Patent owned design, fashion and beautiful appearance the separate heat dissipation fully ensure the stability and long lifespan of LED light.

Light body adopts high pressure die-casting aluminum, surface with fluorine carbon spraying.

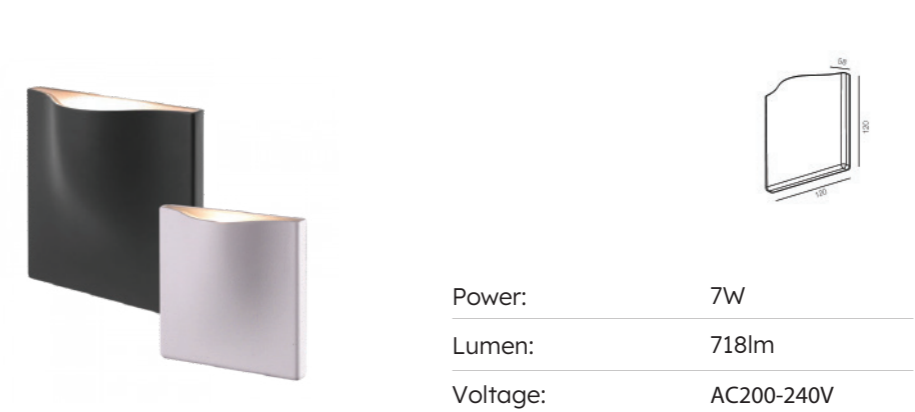
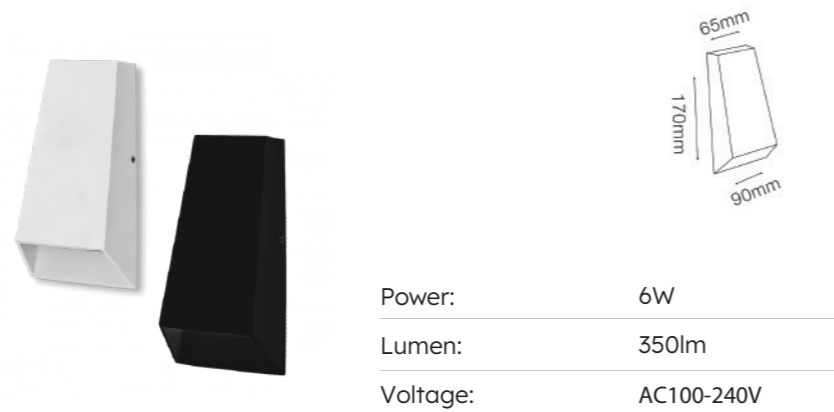
Lampshade adopts high strength toughened glass, resist the impact and friction.





# Wall Light

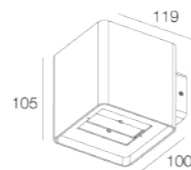
This family light contains two designs, both of them focus on the effect of light, and the extraordinary outlookings, being unique and exclusive



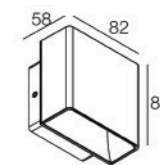
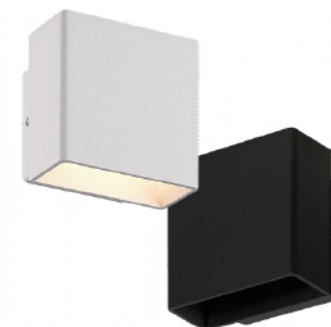


# Wall Light

Thanks to its square shape, the light's design is pleasantly discreet and fits many facades and styles. The light is emitted both upwards and downwards



Power:	10W
Lumen:	883lm
Voltage:	AC100-240V



Power:	5W
Lumen:	358lm
Voltage:	AC200-240V



# Wall Light

Power: 10W/20W

Size:  $\Phi 75 \times 170$ mm/240mm

Beam angle: 22°

## Facade Quality

Is a quality product and fulfilled by the highest technical and visual demands. 2 mm thick high quality aluminum has been used to produce the body of the light. The rounded edges look subtle and elegant. Meanwhile, the surface of the light has been brushed and given a facade-quality, last long by time.



# Inground

Power: 3W/9W  
Beam angle: 10°/15°  
IP:67  
Voltage: 24V

## Safety

Body of luminaires is made of high quality stainless steel 316 with pre-treatment of surface ensure rusty and corrosive protection. Intelligent and high class design with no screw on the surface of the lamp. Low voltage 24Volt DC with IP67 protection index ensure the lamp can work on harsh environment.



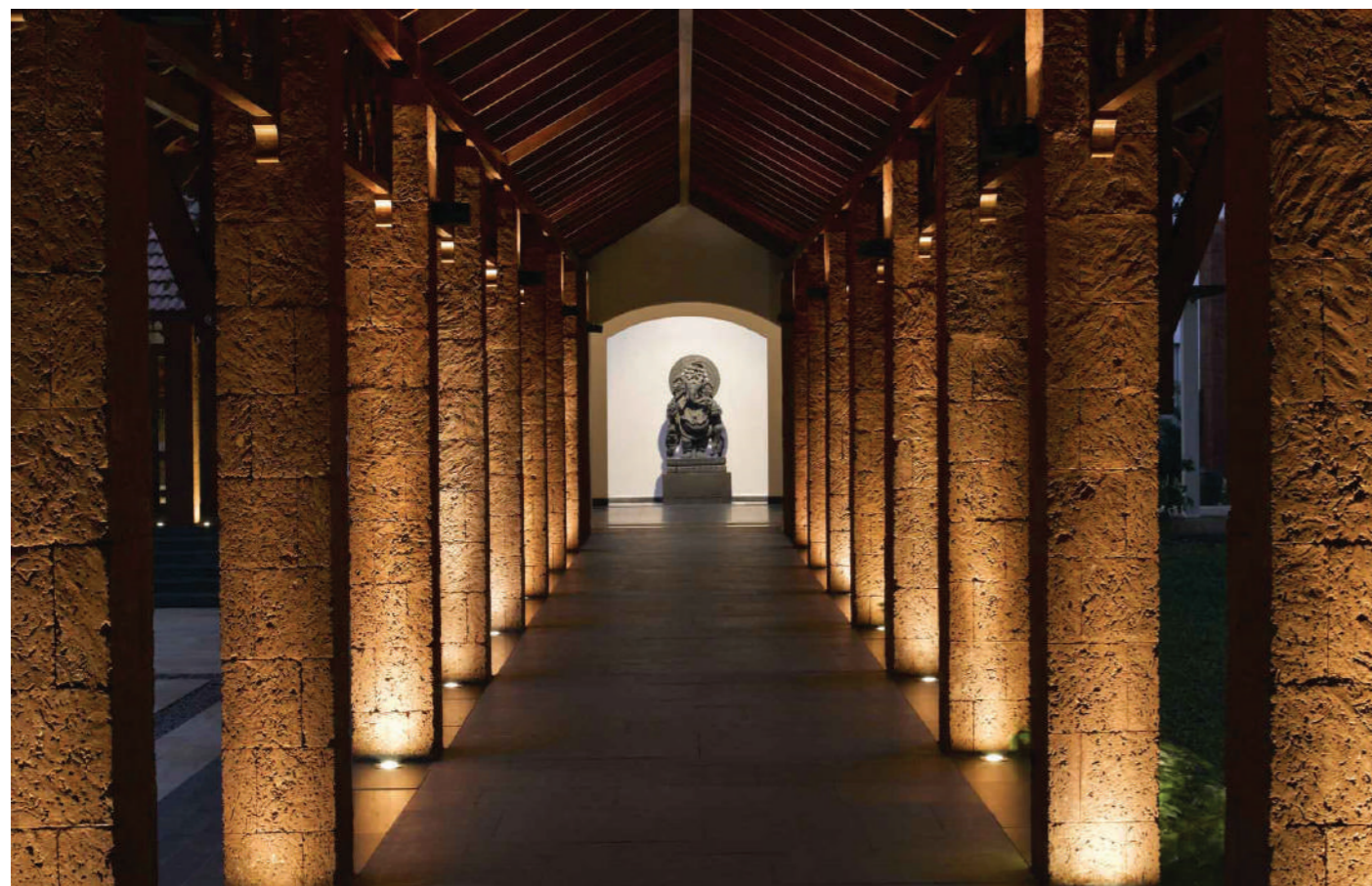
3W  
⌀ 40mm



3W  
⌀ 50mm



9W  
⌀ 85mm



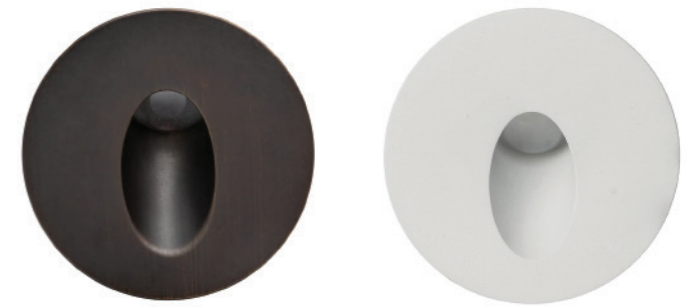


# STEP LIGHT

Power: 1W/3W  
IP: 65/67  
Voltage: 24V/220V

## Elegant Round Edge

Steps light with anti glare design promises to provide the most romantic ambience at night. The elegant round edge will never be old fashion in interior design.



# Bollard



Power:	7W
Beam angle:	42°
Dimension:	75*650mm
IP:	54



Power:	6W
Beam angle:	82°
Dimension:	Φ120*650mm
IP:	54



Power:	6W
Beam angle:	360°
Dimension:	Φ90*300/600mm
IP:	65



Power:	7W
Beam angle:	360°
Dimension:	Φ75*H650mm
IP:	54



# Bollard



Power:	7W
Beam angle:	33°
Dimension:	H650mm
IP:	54



Power:	7W
Beam angle:	50°
Dimension:	50*H400mm
IP:	65

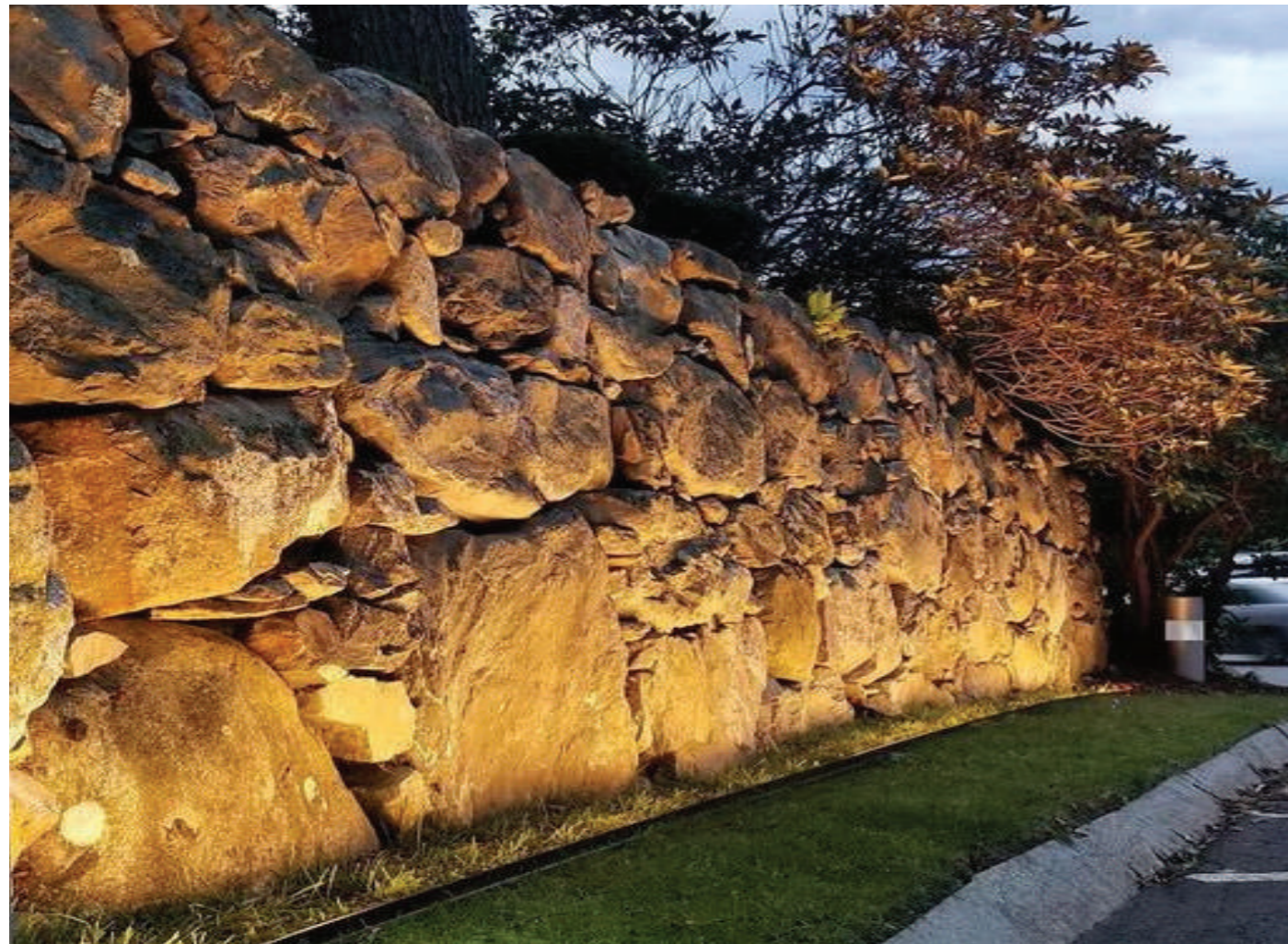


# Linear

Power: 10W/13W

Beam angle: 8°/30°

Dimension: 500/1000mm



Association Partners



# Smart Control

## Perfect Combination Of Lighting And Smart Control

The lighting control system combined with lighting design not only simply brings light but also enhances your living and working space. This combination optimizes the ability to use light in an automatic and flexible way, ensuring the lighting environment always matches each user's needs and preferences.

With professional lighting design, the system not only highlights the architecture and interior space but also creates exquisite visual experiences. Lighting is arranged and adjusted to both ensure aesthetics and support daily activities such as working, relaxing or entertaining.

The smart lighting control system allows you to adjust intensity, color, and lighting mode with just one touch or via mobile devices. In addition, the system also integrates automatic sensors, helping to optimize energy use by adjusting lighting according to the external environment and user presence.

This system is not only a technological solution but also a step forward in improving the quality of life, helping your space become more perfect in both function and aesthetics.



# Human Centric Light

Human-Centric Lighting is an approach to lighting design based on human biological and psychological needs. HCL simulates natural light, adjusting the intensity and color of light during the day to match human circadian rhythms. This helps improve sleep, mental health, and work performance.

- Regulates circadian rhythm: Soft blue light in the morning helps trigger alertness, while soft warm light in the evening helps the body relax and prepare for sleep.
- Enhance concentration and productivity: In the work environment, HCL helps increase concentration and work performance, while reducing stress.
- Improves mood and overall health: HCL supports psychological and emotional health, especially in spaces such as homes, schools, and hospitals.

# Lighting Design

## Don't Light Everything But Control it

Those commonly used diffused downlights might seem innocent, but they'll leave your space looking flat, underlit, and about as exciting as a piece of lettuce. We need lights with drama, lights that can create layers and depth, and lights with beam control

Lighting context is the customization of lighting systems to specific situations or activities. Instead of just having one fixed lighting mode, the system will provide many different lighting scenarios, such as:

Living mode: Strong, focused light to increase work efficiency.

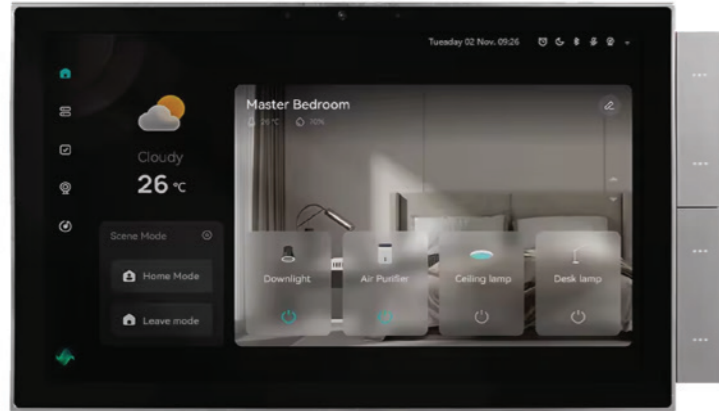
Relaxation mode: Soft, warm light creates a comfortable feeling.

Entertainment mode: Multi-color, flexible lighting suitable for party or movie viewing spaces.

These lighting scenarios not only enhance the user experience but also optimize the space for many different purposes, creating convenience and flexibility.

# Central Control

Is a smart central control panel, Zigbee & Bluetooth independent chips, integrate Zigbee and Bluetooth gateway functions, support Bluetooth BLE & BLE mesh Sub-devices, and have edge capabilities for localized control.



Zigbee 3.0



Bluetooth 5.0



Wifi



NFC



RJ45



RS485

## Main Features:

**Device control:** Fully compatible device access and diversified control forms are compatible with almost all ecological devices.

**Scene control:** Customs physical buttons, screen interaction, and voice interaction can trigger scenes to meet different needs in life.

**Rich interface:** A variety of base forms are supported, the standard base uses zero-fire wire wiring, supports dual relays, RJ45 network port and RS485.





# Control Panel Mini

Smart home gateway voice control, super Zigbee device compatibility, group dimming system.



## Main Features:

100+ Zigbee sub-devices can be added in.

3 Control modes at different distance with 3 themes

Add smart doorbell and smart camera, which will show the screen outside the door when someone rings the bell contributing a higher level of security to the family.

Support group wireless dimming lighting. Works with zigbee dimming driver, can realize single light and group lights dimming.



# Control Panel Mini

2020 Golden Pin Design Award

connection Ethernet (wired) smart home gateway. It supports all kinds of tuya smart Zigbee subdevices, such as Zigbee wall switch, PIR human movement sensor, temperature and humidity sensor, curtain motor



## Main Features:

- Power supply: 5V1A
- Working temperature: -10~45°
- Wireless communication protocol: Lan connectip + Zigbee



## Main Features:

- Power supply: Micro-USB
- Working temperature: -10~55°
- Wireless communication protocol: WiFi+Zigbee+bluetooth





# Smart Swtich

Upgrade your lighting control with our Zigbee Smart Switch – designed for seamless integration into modern smart homes. With wireless connectivity, responsive touch controls, and compatibility with Tuya and popular smart ecosystems, it enables effortless scene setting, remote control via app, and voice command support. Crafted with a minimalist aesthetic and reliable performance, this switch brings both style and intelligence to your living space.



WHITE



GOLD



GRAY

# Smart Swtich

Available in three elegant finishes – White, Gold, and Gray – the Zigbee Smart Switch blends effortlessly into various interior styles. Designed for stable operation, it requires a neutral wire (N) for proper functionality, ensuring reliable connectivity and performance. Whether in residential or commercial spaces, it offers a perfect balance of aesthetics, durability, and smart convenience.

## Main Features:

Product size: 86\*86MM

Input parameters: 250V-10A, 50/60HZ

Operating temperature: <20°C-60°C

Wireless Protocol: ZIGBEE MESH

# Smart Knob

Prismatic grid design shape out the minimalist aesthetics. "The roses" series are a combination of classic and fashion. When turn the knob, you feel the sense of mechanical damping to control the lighting more precisely

## Main Features:

Materials : Fireproof PC + Aviation aluminum

Dimension : 66mm\*56mm

Portable and Chargeable

Built-in Lithium battery

